

Truin Science Ltd.

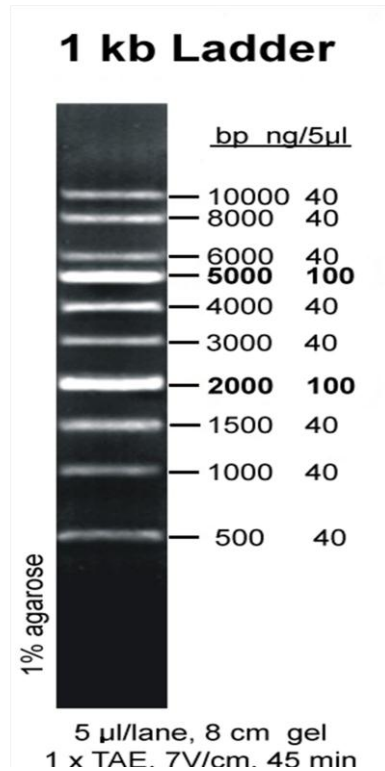
Ready Load – 1kb

**1 kb DNA MW Ladder
(50 µg)**

Cat. # RTS6020

***Storage: 1 year at room
temperature, for long term
preservation, store at -20°C.**

***For research purposes only.**



Concentration: 104ng/µl

Recommended Loading: 2-5 µl/lane

Concentration

Typical Bands 100 ng/5µl

Other Bands 40 ng/5µl

Recommended Electrophoresis Condition

8 cm 1% Agarose Gel, 1x TAE,
7 V/cm, 45 minutes.

Contents (bp)

500, 1000, 1500, 2000, 3000, 4000,
5000, 6000, 8000, 10000

Description

1kb ladder is suitable for sizing linear
double-stranded DNA fragments
from 500bp-10kb, and composed

of ten chromatography-purified
individual DNA fragments. All bands
(except 2kb and 5kb) are supplied at
approximately 40 ng/5µl. The 2kb
and 5kb bands are 100ng. This ladder
is pre-mixed with loading dye and is
ready to use.

Recommendations

Do not heat before loading.
For quantification, adjust the
concentration of the sample to
equalize it approximately with the
amount of DNA in the nearest band
of the ladder. Visualize DNA by
staining with Ethidium Bromide or
with SYBR®Green I.

